

RESOLUTION NO. 98-41

RESOLUTION CREATING RURAL SPECIAL IMPROVEMENT DISTRICT #662M
FOR STREET MAINTENANCE
(Lots 1-4, Block 1 & Lot 1, Block 2, Mountain View Subdivision)

WHEREAS, a Petition signed by more than sixty percent (60%) of the Freeholders of the proposed district has been submitted to the Board of County Commissioners for creation of a rural special improvement district for maintenance of streets, including its proportionate share of 48th Street West for future crack and chip sealing of the newly constructed paved roads in Mountain View Subdivision within Yellowstone County, Montana; and,

WHEREAS, the boundaries of the proposed district are the exterior boundaries of the following described real property: (See Exhibit A, attached); and,

WHEREAS, all of the costs of the district shall be assessed against the entire District as follows:

There are presently two (2) blocks in the District. The assessment for all costs pertaining to the District shall first be divided equally between each block, then each block's share shall be divided equally between each present or future lot in said block. Refer to table below:

<u>PARCEL</u>	<u>% OF TOTAL ASSESSMENT</u>	<u>PARCEL</u>	<u>% OF TOTAL ASSESSMENT</u>
Block 1		Block 2	
Lot 1	12.5%	Lot 1	50%
Lot 2	12.5%		
Lot 3	12.5%		
Lot 4	12.5%		

WHEREAS, now is the date and time duly noticed and published as required by law for the Board of County Commissioners of Yellowstone County to hear and pass upon all protests that may be made against the making of said maintenance district; and,

WHEREAS, no protests have been delivered to the County Clerk since the duly published first notice of the passing of the Resolution of Intention; and,

WHEREAS, the Board of County Commissioners has acquired jurisdiction to order the improvements pursuant to MCA 7-12-2113; and,


WHEREAS, the district shall be considered a district to exist perpetually unless included within another district providing the same services or assumed by a municipality;

NOW, THEREFORE BE IT HEREBY RESOLVED that the Board of County Commissioners of Yellowstone County, Montana, deeming the public interest or convenience require, and having acquired jurisdiction, hereby creates Rural Special Improvement District #662M, Yellowstone County, Montana, more particularly described in attachment "A" and as follows:


- 1. **DESCRIPTION OF DISTRICT.** Lots 1-4, Block 1 & Lot 1, Block 2, Mountain View Subdivision.
- 2. **DESCRIPTION OF IMPROVEMENTS.** The district shall be created for maintenance of streets, including its proportionate share of 48th Street West for future crack and chip sealing of the newly constructed paved roads in Mountain View Subdivision, Yellowstone County, Montana.
- 3. **ESTIMATED COSTS.** The estimated costs of the district will be \$250.00 per year per block (such costs may vary from year to year).
- 4. **DURATION.** The district shall be deemed to be perpetual in nature unless absorbed and replaced by another district or a municipality.

RESOLUTION CREATING RURAL SPECIAL IMPROVEMENT DISTRICT #662M dated the 7th day of April, 1998.

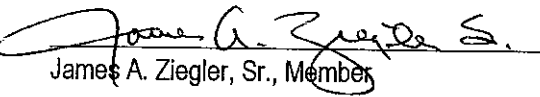
BOARD OF COUNTY COMMISSIONERS
YELLOWSTONE COUNTY, MONTANA



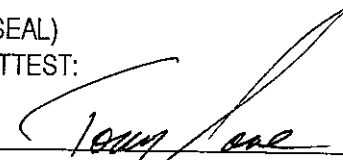
Bill Kennedy, Chairman



Mike Mathew, Member



James A. Ziegler, Sr., Member

(SEAL)
ATTEST:


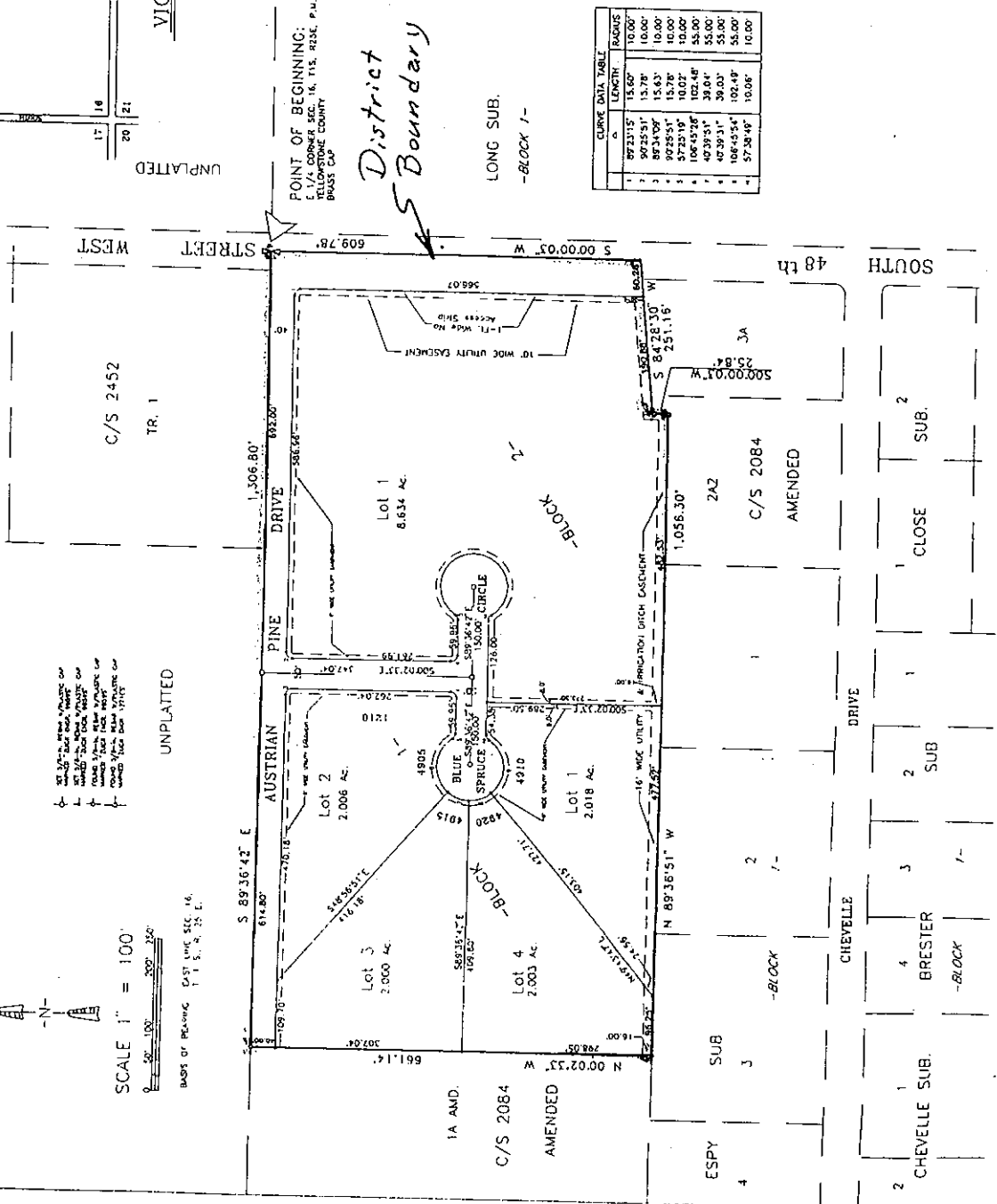
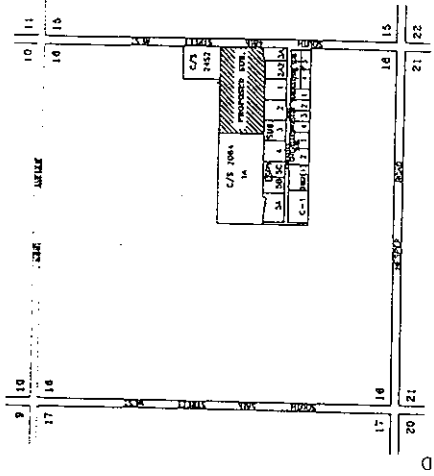
Tony Nave, Clerk and Recorder

PLAT OF
MOUNTAIN VIEW SUBDIVISION
 BEING LOT 1B1 AMD. & LOT 1B2 of
 AMENDED CERTIFICATE of SURVEY No. 2084
 SITUATED IN THE N1/2 SE1/4 SECTION 16, T 1 S. R 25 E, P.M.M.
 YELLOWSTONE COUNTY, MONTANA
 BY: ZUCK ENGINEERING COMPANY
 FOR: LEONARD SENN
 NOVEMBER, 1997

SCALE 1" = 100'

BASED ON RECORD EASTING SEC. 16, T.1 S., R. 25 E.

- 1 1/4" = 1/4" = 1/4" = 1/4" = 1/4" = 1/4"
- 2 1/4" = 1/2" = 1/2" = 1/2" = 1/2" = 1/2"
- 3 1/4" = 3/4" = 3/4" = 3/4" = 3/4" = 3/4"
- 4 1/4" = 1" = 1" = 1" = 1" = 1"
- 5 1/4" = 1 1/4" = 1 1/4" = 1 1/4" = 1 1/4" = 1 1/4"
- 6 1/4" = 1 1/2" = 1 1/2" = 1 1/2" = 1 1/2" = 1 1/2"
- 7 1/4" = 1 3/4" = 1 3/4" = 1 3/4" = 1 3/4" = 1 3/4"
- 8 1/4" = 2" = 2" = 2" = 2" = 2"
- 9 1/4" = 2 1/4" = 2 1/4" = 2 1/4" = 2 1/4" = 2 1/4"
- 10 1/4" = 2 1/2" = 2 1/2" = 2 1/2" = 2 1/2" = 2 1/2"
- 11 1/4" = 2 3/4" = 2 3/4" = 2 3/4" = 2 3/4" = 2 3/4"
- 12 1/4" = 3" = 3" = 3" = 3" = 3"
- 13 1/4" = 3 1/4" = 3 1/4" = 3 1/4" = 3 1/4" = 3 1/4"
- 14 1/4" = 3 1/2" = 3 1/2" = 3 1/2" = 3 1/2" = 3 1/2"
- 15 1/4" = 3 3/4" = 3 3/4" = 3 3/4" = 3 3/4" = 3 3/4"
- 16 1/4" = 4" = 4" = 4" = 4" = 4"
- 17 1/4" = 4 1/4" = 4 1/4" = 4 1/4" = 4 1/4" = 4 1/4"
- 18 1/4" = 4 1/2" = 4 1/2" = 4 1/2" = 4 1/2" = 4 1/2"
- 19 1/4" = 4 3/4" = 4 3/4" = 4 3/4" = 4 3/4" = 4 3/4"
- 20 1/4" = 5" = 5" = 5" = 5" = 5"
- 21 1/4" = 5 1/4" = 5 1/4" = 5 1/4" = 5 1/4" = 5 1/4"
- 22 1/4" = 5 1/2" = 5 1/2" = 5 1/2" = 5 1/2" = 5 1/2"
- 23 1/4" = 5 3/4" = 5 3/4" = 5 3/4" = 5 3/4" = 5 3/4"
- 24 1/4" = 6" = 6" = 6" = 6" = 6"



CURVE DATA TABLE

1	2	3	4	5	6	7	8	9	10
2923.15'	5023.51'	9234.09'	9228.51'	5729.19'	4739.54'	4739.54'	1064.554'	5730.19'	10.00'
15.60'	15.78'	15.63'	15.78'	10.02'	39.03'	39.03'	102.48'	18.08'	10.00'
10.00'	10.00'	10.00'	10.00'	55.00'	55.00'	55.00'	55.00'	10.00'	10.00'

Exhibit "A"

4 3